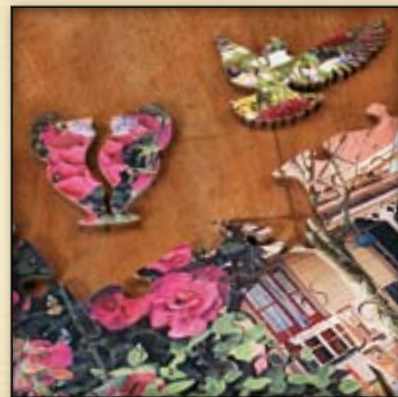




WENTWORTH

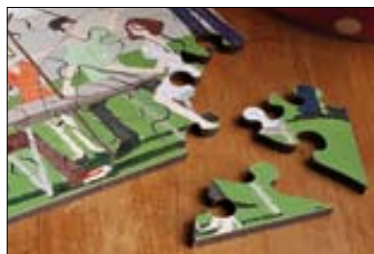
WOODEN PUZZLES

2012 Trade Catalogue



Welcome to our 2012 Catalogue

You'll find it packed full of our best selling puzzles and Christmas designs. You can now plan your whole year's buying, selecting from our wide range of themes; including everything from the Weird and Wonderful to Fine Art and our ever popular Chocolate Box ranges. Select your Christmas designs and buy with confidence knowing that the puzzles in this catalogue are our most popular sellers.



What makes a Wentworth Puzzle?

Our puzzles are made in the **UK from 3mm thick wooden board** derived from sustainably managed forests.

Our unique Wentworth '**Whimsy**' shapes are **included in standard puzzles** and like all our puzzle pieces they're a joy to handle.

The **ultimate enjoyable challenge**; our puzzles rarely include two pieces the same or corner pieces, and straight edges can be found in middle pieces.

Maxi and above puzzles come in a cloth bag inside a **stylish but sturdy box made from recycled material**.

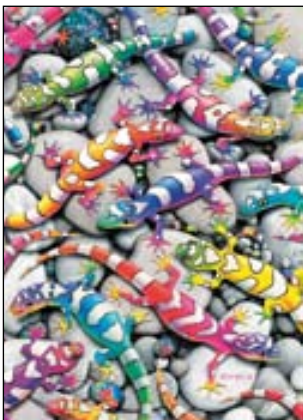
Puzzle	Code	Size	Pieces
Micro	Z	120 x 82mm (4.6 x 3.1")	40pc
Midi	X	250 x 175mm (10 x 7")	140pc
Maxi	W	360 x 250mm (14 x 10")	250pc
Mega	T	510 x 360mm (20 x 14")	500pc
Magnum	S	580 x 420mm (23 x 17")	750pc
Millennium	R	730 x 510mm (29 x 20")	1000pc
Majestic	N	810 x 570mm (32 x 22")	1500pc

How to order

- Use the **enclosed order form** to select from our range of sizes available for each image.
- Email your order to sales@jigsaws.co.uk
- Call **01666 840033** for more information or to place your order.



WENTWORTH
WOODEN PUZZLES



Code: **492513**

Geckos

By Royce B. McClure © Royce B. McClure



Code: **2301**

The Definitive™ Puzzle

© Royal Mail Group plc



Code: **511413**

Sky Roads

By Royce B. McClure © Royce B. McClure

Weird & Wonderful



Code: **463006**

Confusion at the Edge

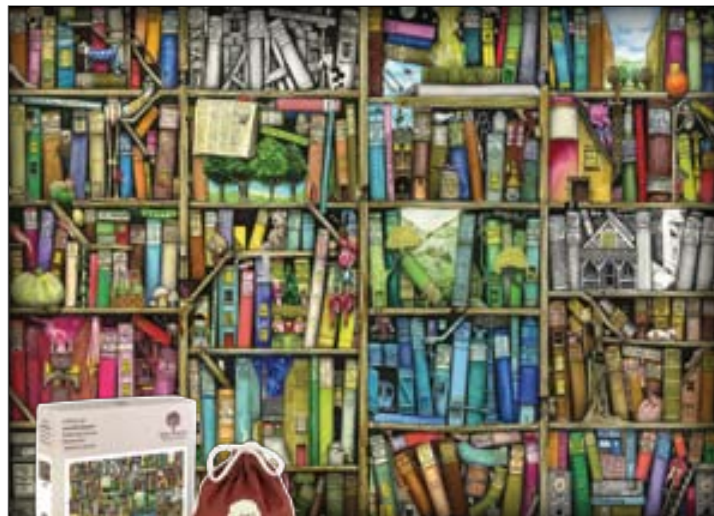
By Lindsey Selley © Lindsey Selley



Code: **441813**

Agemaki

© Haruyo Morita, Licensed By MGL, www.mgl-uk.com



Code: **441613**

Bookshelf

© Colin Thompson, Licensed By MGL, www.mgl-uk.com



Code: **561306**

Hedgehog

By David Feather © DDFA



Code: **561106**

Red Squirrels

By David Feather © DDFA



Code: **480501**

Wildlife Scene II

By Chris Shields © Chris Shields



Code: **522306**

Dawns Outpost

© Terry Doughty, Licensed by MGL, UK. www.mgl-uk.com



Code: **550906**

Rabbit Trio

By Lynne Jones © DDFA



Code: **550606**

Birds for all Seasons

By Howard Robinson © Howard Robinson



Code: **492806**

You Are Unforgettable

© Jody Bergsma, Licensed By MGL, www.mgl-uk.com



Code: **3206**

Bluebell Wood

By Koji Sakai © Koji Sakai 2005



Code: **8440**

Heads or Tails

© Brian Flory, Licensed By MGL, www.mgl-uk.com



Code: **512408**

Blue Tits

By Peter Daly © DDFA



Code: **4107**

The Cradle of Life

By Howard Robinson © Howard Robinson



Code: **530806**

Pets in the Park

By Howard Robinson © Howard Robinson



Code: **434006**

Cock & Hen Pheasants in the Woodlands

By Archibald Thorburn © Felix Rosenstiel's Widow & Son Ltd

Animals & Nature



Code: **510406**

The Great Outdoors

By Howard Robinson © Howard Robinson



Code: **483506**

Rosy Glow

By Howard Robinson © Howard Robinson



Code: **522506**

White Tigers of Bengal

By Howard Robinson © Howard Robinson



Code: **4110**

Leopard and Cub

By Howard Robinson © Howard Robinson



Code: **531206**

Woodland Harmony

© Chris Hiett, licensed by MGL, UK. www.mgl-uk.com



Chocolate Box



Code: **541108**
Swan Cottage

By Howard Robinson © Howard Robinson



Code: **511102**
Friends for Tea

By Stephen Darbishire © Stephen Darbishire



Code: **541208**
Sunday Morning

By Stephen Darbishire © Stephen Darbishire



Code: **490502**
Cottage Garden

By Royce B McClure © By Royce B McClure



Code: **2509**
Thirties Sunday

By Kevin Walsh © By Kevin Walsh



Code: **542608**
All Quiet in the Village

By Gordon Lees © DDFA



Code: **541308**
Lighthouse Cottage

By Richard Telford © DDFA



Code: **511202**
Suffolk Village

By Alex Sheridan © Felix Rosentiel's Widow & Son



Code: **452208**
VE Day Celebration
By Kevin Walsh © By Kevin Walsh



Code: **550201**
Bucket and Spade
By Kevin Walsh © Kevin Walsh



Code: **442408**
Spring Farm
By Howard Robinson © Howard Robinson

Nostalgia



Code: **533308**
Past Time at the River
By Kevin Walsh © By Kevin Walsh



Code: **551108**
A Day Out
© 2011 Steve Crisp, Licensed by MGL, UK. www.mgl-uk.com



Code: **561508**
A Village in Autumn
By Steve Crisp © Courtesy of www.image-source.co.uk



Code: **541709**
Ready for the Road
By Peter Bradshaw © DDA



Code: **540513**
Victorian Miscellany

© The History of Advertising Trust. Charity Number: 276194

Fine Art



Code: **560604**
Market Scene, Northern Town, 1939
By LS Lowry © The Lowry Collection, Salford



Code: **542704**
Sheep Reposing, Dalby Bay, Isle of Man
By Bradley Basil © Fine Art Photography Library



Code: **453104**
Portrait of Henry VIII (1491-1547)
By Holbein, Hans the Younger (1497-1543) © Belvoir Castle/Bridgeman Art Library



Code: **482404**
London, The Thames with View of the City and St Paul's Cathedral
By Canaletto © akg-images



Code: **510704**
The Hay Wain
By John Constable © Felix Rosenstiel's Widow & Sons



Code: **4209**
Primavera
By Sandro Botticelli © Felix Rosenstiel's Widow & Son



Code: **531704**
The Dance Class
By Edgar Degas © akg-images/Erich Lessing



Code: **511904**

The Royal Family in 1846

By Franz Xaver Winterhalter © 2010, Her Majesty Queen Elizabeth II



Code: **472504**

Bedroom in Arles

By Vincent van Gogh © akg-images / Laurent Lecat



Code: **FR112**

The Fighting Temeraire

By J.M.W Turner © Felix Rosenstiel's Widow & Sons



Code: **FR104**

Sunflowers

By Vincent van Gogh © Van Gogh Museum Enterprises, Amsterdam



Code: **491804**

Flaming June

By Frederic Leighton © akg-images



Code: **1210**

Le Pont Japonais

By Claude Monet (1840 - 1926) © Christie's Images Ltd



Code: **540704**

The Christening Reception

By Johann Hamza © By courtesy of Felix Rosenstiel's Widow & Son



Code: **511604**

Diana and her Nymphs (Detail)

By Robert Burns, c 1926 Image © The National Galleries of Scotland



Code: **FR118**

Luncheon of The Boating Party

By Pierre-Auguste Renoir © Phillips Collection, Washington DC



Code: **531504**

Children's Games

Brueghel, Pieter the Elder © akg-images



Code: **560504**

Portrait of Adele Bloch-Bauer I

By Gustav Klimt © Photo: akg-images

Contemporary Art



Code: **4212**
Fruit Market
 By Vanita Comissiong © Felix Rosenstiel's Widow & Son Ltd



Code: **550101**
Seaside
 By Julia Rigby © Julia Rigby



Code: **450603**
Lavender Lunch
 By Louise Braithwaite © Mad Lou Publishing Ltd



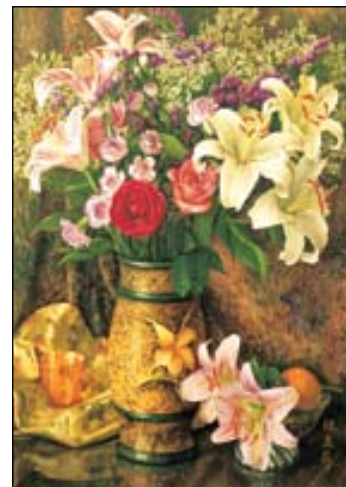
Code: **510803**
Allotments
 By Julia Rigby © Julia Rigby



Code: **JPS45**
Bridge Players
 © Annie Tempest



Code: **3716**
I'm a firm believer in METHOD!
 By Creswell © Creswell



Code: **491603**
The Birthday Present
 By Zhang Meili © Zhang Meili; Licensed By Artkey



Code: **3818**

York

By Gordon Lees © DDFA



Code: **501305**

Whitby Harbour, Summer Twilight

By Joe Cornish © Joe Cornish



Code: **8133**

Interior of St Paul's Cathedral

© St Paul's Cathedral

Buildings & Places



Code: **8434**

Buckingham Palace

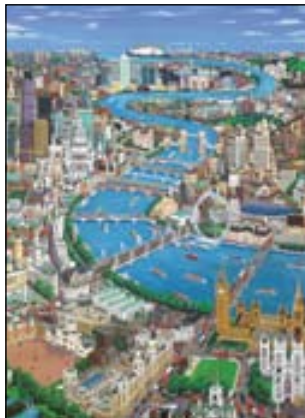
By Simon Weinstock © www.cookie-art.com



Code: **562205**

Castell Dolwyddelan Castle

By Pierino Algieri © Pierino Algieri



Code: **4202**

London - The Thames

By Christopher Rogers © Christopher Rogers



Code: **542005**

Venice

By Howard Robinson © Howard Robinson



Transport & Sport



Code: **572601**
Ready to Go
By Peter Bradshaw © DDA



Code: **532909**
Hercules - Falklands Freedom 1986
By Robin Smith © Robin Smith



Code: **8224**
QE2
By Simon Fisher © Simon Fisher



Code: **3623**
Transport Collage
By Alex Williams © Alex Williams



Code: **510308**
Cadbury Transport
By Kevin Walsh © Kevin Walsh



Code: **562409**
Chipping Norton
By Peter Webster © Peter Webster



Code: **532809**
GWR Castle on Broadlands Viaduct
By Mike Jeffries © Mike Jeffries



Code: **4121**
A Village Cricket Game
by Ronald Lampitt © Sue Windett



Code: **541909**

Sixty Years Passenger Service for the Capital

By Trickett and Webb, 1993 © Transport for London



Code: **911**

Brayford Pool and Lincoln Cathedral

By John Carmichael © Felix Rosenstiel's Widow & Son Ltd



Code: **242**

The Duchess of the Night

By Malcolm Root © Malcolm Root



Code: **533109**

Clipper Ship

By A Chidley © Felix Rosenstiel's Widow and Son



Code: **481609**

Battle of Britain Memorial Flight

By Trevor Mitchell © Trevor Mitchell



Code: **8309**

Bentleys at Le Mans, 1929

By Terence Cuneo © The Cuneo Estate



Code: **533009**

London Transport STL

By Mike Jeffries © Mike Jeffries



Code: **562003**

Classic Sports Gear

© 2011 Simon Kayne Licensed by MGL, UK. www.mgl-uk.com



Code: **441004**

In the Saddling Paddock, Cheltenham

By Sir Alfred Munnings © Felix Rosenstiel's Widow & Son



Code: **492013**

Only 197 km to go

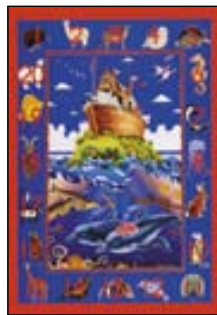
By Ken Skehan © Ken Skehan

Children's Puzzles

Code: **4123**
Ark Double Puzzle
 By Richard Henson
 © Interlitho GmbH



Puzzles
 come in one
 box as a 2 x
 40 piece pair
 in separate
 bags



Code: **471913**
You are Here
 By Royce B. McClure © Royce B. McClure



Code: **4225** **World Map Puzzle**
 by Anna Nilsen © Anna Nilsen

A rare treat for children, our puzzles are more robust than cardboard and can be passed down through generations!

The size and number of pieces depends on the child but generally the following applies: **3 to 5 years: 50 or 100 pieces**
6 to 9 yrs: 100 or 250 pieces



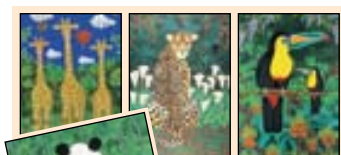
Code: **8312**
The Jungle Crew
 by Caroline New © Funkreactions



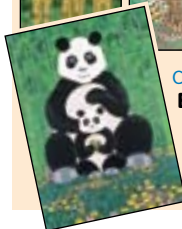
Code: **522907**
Dinosaur Volcano
 © 2010 Licensed by MGL, UK. www.mgl-uk.com



Code: **4134**
The Fairy Ring - Twilight Dancers
 © Steve Read, Licensed by MGL, UK. www.mgl-uk.com



Code: **3732**
**Brian Pollard
 Wildlife Puzzle
 Travel Pack**
 by Brian Pollard
 © Brian Pollard





Code: **530301**
Painted Easter Eggs
© Big Stock Photo



Code: **460306** **Autumn Circle**
By Lynne Jones © DDFA



Code: **531306** **Blue Tits in Spring**
By Richard Telford © DDFA



Seasonal



Code: **530501**
Springtime by the Lake
By Stephen Darbishire © Stephen Darbishire



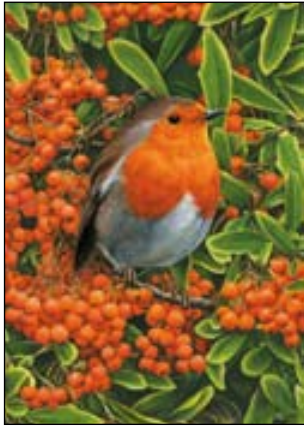
Code: **530601**
A Mid Spring Gathering
By Albert Williams © Felix Rosenstiel's Widow & Son



Code: **490313**
Spirit of Summer
© Ciro Marchetti, licensed by MGL, www.mgl-uk.com



Code: **560101**
Forever Autumn
© Dominic Davison, licensed by MGL, UK. www.mgl-uk.com



Code: **570701**
Orange Robin

By Simon Mendez © Advocate Art



Code: **520713**
Snowflakes

By Royce B. McClure © Royce B. McClure



Code: **571903**
Christmas Chorus

By Pat Scott © Private Collection/The Bridgeman Art Library



Code: **571813**
Christmas Compendium

© The History of Advertising Trust. www.hatads.org.uk



Code: **570301**
Adoration of the Magi

Painting by E. Goffal after Gentile da Fabriano (1370 - 1427) © Retrograph Archive/Mary Evans Picture Library



Code: **520102**
Christmas Tea II

by Stephen Darbishire © Stephen Darbishire



Code: **571704**
Census in Bethlehem

By Brueghel, Pieter the Younger 1564-1638 © Photo: akq-images



Code: **1910**
A Merry Christmas

© Fine Art Photographic Library Ltd, London



Code: **1515**
Three Wise Men

by Mary Tozer © Mary Tozer



Code: **570201**
A Village in Winter

© 2011 Steve Crisp, licensed by MGL, UK. www.mgl-uk.com



Code: **3528**
Glow'd with Tints of Evening Sun

By Joseph Farquharson © Felix Rosenstiel's Widow & Son



Code: **430301**

Victorian Playroom

by Howard Robinson & Kevin Walsh © Howard Robinson



Code: **570501**

Santa's Coming

By Marcello Corti © Advocate Art



Code: **572306**

Kingfishers in Winter

By David Feather © DDFa



Code: **3927**

A Gracious Era

by Alan Maley © Felix Rosenstiel's Widow & Sons



Code: **470301**

Who's Next on the List

By Howard Robinson © Howard Robinson



Code: **521101**

The Snowman

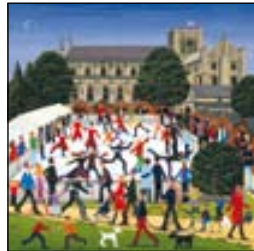
By Richard Telford © DDFa



Code: **472804**

A Merry Christmas from the Pears Annual

By Frank Dadd © The Bridgeman Art Library



Code: **470403**

Winchester Cathedral

By Louise Braithwaite © Mad Lou Publishing Ltd



Code: **570601**

Christmas Choir

By Marcello Corti © Advocate Art

Christmas & Winter Puzzles



Tessellation Puzzles

Try our tessellation cuts if you dare! A real challenge, even for an expert puzzler!



Code: **237**

Stonewall

Photo © Mrs G A Thompson



Code: **8457**

London from the Eye

by Val Horton © Val Horton



Code: **525001**

Recurring Rudolph

© iStockphoto



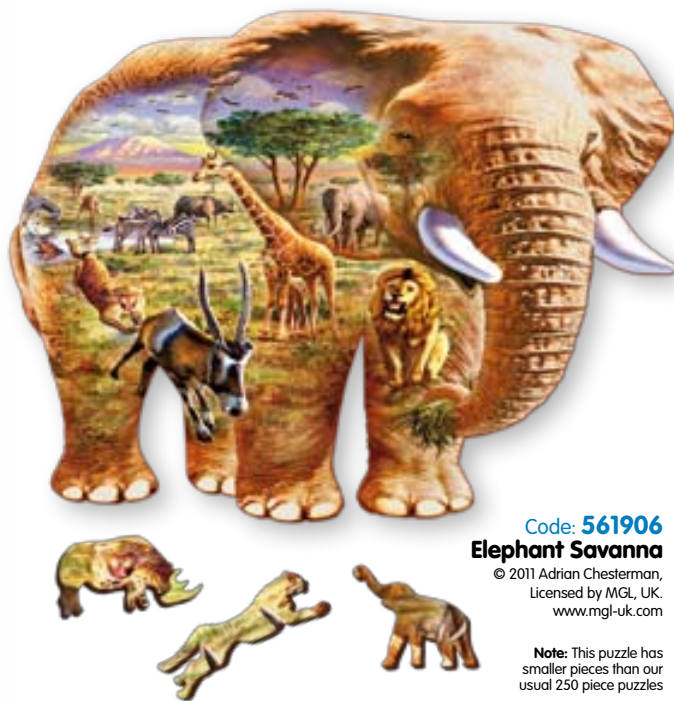
Code: **575101**

The Puzzle that Ruined Christmas

© bigstock

ELEPHANT SAVANNA

Try our Elephant shaped 'Masterpiece' puzzle if you dare! You'll be dazzled by this tantalizingly difficult shaped puzzle which includes stunning wildlife art from Adrian Chesterman plus intricate wildlife whimsy pieces.



Code: **561906**

Elephant Savanna

© 2011 Adrian Chesterman,
Licensed by MGL, UK.
www.mgl-uk.com

Note: This puzzle has smaller pieces than our usual 250 piece puzzles

What Wentworth needs to produce custom-made Puzzles

Finding exclusive gifts to offer your customers is not easy, but our custom made Jigsaw Puzzles with unique “whimsy” pieces allow you to offer your customers something different and unique. We can supply retail products based upon artwork reflecting your own property or treasure, offering your customers a collectable, high quality bespoke souvenir which they can not find anywhere else. A wooden puzzle in quality packaging will be cherished and put together more than once creating a lasting reminder of their visit to you.

How we create a range of custom made puzzles

- You choose and submit your images and any logos to us for assessment
- You select the finished sizes of puzzles you would like to order (Maxi, Midi, Micro).
- You choose a title for each image to appear on the box label
- We produce artwork approval sheets.
- Your order will be ready for delivery in approximately 14 days.

Set-up Fees:

1 x Image = £35 3 x Images = £70

Image

- You must hold the copyright to the image, OR have clearance from the copyright holder to use it.
- Digital images (Ideally jpeg, tiff or pdf) must be at least 300dpi. The higher the resolution the more appealing and faster selling the puzzle will be.
- If colour matching is important, please send us an approved hard copy of your image.
- The images submitted should be in a 1 to 1.4 ratio (for example 6x4 / 7x5). However, we can cater for irregular sizes (e.g. square / panoramic) or crop where required.

Label text

- Box label text with a maximum of 120 characters. We need a title for the image, and, where relevant or required, the artist and copyright holder.
- A high resolution copy of your logo.





Free Standing Display Unit

A premium wooden floor stand, which **includes a real sample puzzle** on the header board.

Ideal for single size or mixed sized puzzle displays, including Mega, Maxi, Maestro or Midi sizes.

FREE display unit with orders over £438*

*Free Standing Display Unit retails at £175
Offer applies to UK only.

Unit Dimensions:
183 cm high (with header),
138.5 cm high (without header),
52.4 cm wide, 38 cm deep

Table-top Display Media



A4 Show Card (Strutted)

Our A4 show card is an excellent sales aid and includes a real sample puzzle so your customers can see and **feel the quality of our puzzles** for themselves.

A generic card is **FREE** with your first carriage paid order.

Micro Puzzle Shelf Display

Excellent, durable wooden counter display, showing nine facings, 27 Micro puzzles in total.

Attached to the **header board includes a real Micro puzzle** from your order to show how challenging and fun our puzzles can be.



The first stand is **FREE** with your 48 Micro order.*

*Shelf Display Unit retails at £20
Offer applies to UK only.

Unit dimensions:
30 cm w, 26 cm d, 38 cm high