

# MAGNETIC PUZZLE CUBE™



**IMPRESIÓN PERFECTA  
ENCAJE PERFECTO  
ATRACCIÓN TOTAL**  
PERFECTLY PRINTED  
PERFECTLY FITTED  
TOTAL  
ATTRACTION

**13726  
MAGNETIC PUZZLE  
CUBE PAISAJES  
(27 CUBOS)**

Caja 35,2 x 29,2 x 16,5 cm  
Contenido: 27 Cubos magnéticos,  
3 Cubos modelos.  
Unidades Caja 6 uds.

**MAGNETIC PUZZLE  
CUBE LANDSCAPES  
(27 CUBES)**

Box 35,2 x 29,2 x 16,5 cm  
Content: 27 Magnetic cubes,  
3 Cube models.  
Units per box 6



**3 COMBINACIONES = 18 IMÁGENES  
3 COMBINATIONS = 18 IMAGES**



# MAGNETIC PUZZLE CUBE™



**IMPRESIÓN PERFECTA  
ENCAJE PERFECTO  
ATRACCIÓN TOTAL**  
PERFECTLY PRINTED  
PERFECTLY FITTED  
TOTAL  
ATTRACTION

**13727  
MAGNETIC PUZZLE  
CUBE OBRAS DE ARTE  
(27 CUBOS)**

Caja 35,2 x 29,2 x 16,5 cm  
Contenido: 27 Cubos magnéticos,  
3 Cubos modelos.  
Unidades Caja 6 uds.

**MAGNETIC PUZZLE  
CUBE WORKS OF ART  
(27 CUBES)**

Box 35,2 x 29,2 x 16,5 cm  
Content: 27 Magnetic cubes,  
3 Cube models.  
Units per box 6



**3 COMBINACIONES = 18 IMÁGENES**  
**3 COMBINATIONS = 18 IMAGES**



# MAGNETIC PUZZLE CUBE™

**2 COMBINACIONES = 12 IMÁGENES**

**2 COMBINATIONS = 12 IMAGES**



## 13728 MAGNETIC PUZZLE CUBE VIDA SALVAJE (8 CUBOS)

Caja 29 x 21,9 x 11,5 cm  
 Contenido: 8 Cubos magnéticos,  
 2 Cubos modelos.  
 Unidades Caja 6 uds.



## MAGNETIC PUZZLE CUBE WILDLIFE (8 CUBOS)

Box 29 x 21,9 x 11,5 cm  
 Content: 8 Magnetic cubes,  
 2 Cube models.  
 Units per box 6



**IMPRESIÓN PERFECTA  
ENCAJE PERFECTO  
ATRACCIÓN TOTAL**  
 PERFECTLY PRINTED  
 PERFECTLY FITTED  
 TOTAL ATTRACTION



## 13729 MAGNETIC PUZZLE CUBE ANIMALES (8 CUBOS)

Caja 29 x 21,9 x 11,5 cm  
 Contenido: 8 Cubos magnéticos,  
 2 Cubos modelos.  
 Unidades Caja 6 uds.



## MAGNETIC PUZZLE CUBE ANIMALS (8 CUBOS)

Box 29 x 21,9 x 11,5 cm  
 Content: 8 Magnetic cubes,  
 2 Cube models.  
 Units per box 6



**Y TAMBIÉN...  
PARA LOS MÁS  
PEQUEÑOS...**

**AND FOR THE CHILDREN...  
ET POUR LES ENFANTS ...**



8412668137301

8412668137318

8412668137325



# Personal Puzzle



¿Cómo puedo conseguir ya mi puzzle personal MAGIC PUZZLE®?

CONÉCTATE A [WWW.MAGIC-LABS.COM](http://WWW.MAGIC-LABS.COM) Y VERÁS QUE FÁCIL ES CONSEGUIRLO.

How can i get my personal MAGIC PUZZLE®?

GO TO [WWW.MAGIC-LABS.COM](http://WWW.MAGIC-LABS.COM) AND YOU WILL SEE HOW EASY IT IS.

Como é que posso conseguir já o meu puzzle pessoal MAGIC PUZZLE®?

CONECTE-SE A [WWW.MAGIC-LABS.COM](http://WWW.MAGIC-LABS.COM) E VERÁ QUE FÁCIL É CONSEGUIR-LO.

PIEZAS PIECES PEÇAS	TAMAÑO EN CM SIZE IN CM TAMANHO EM CM	PIXELS PIXELS PIXELS
40	17 x 25.7	1004 x 1518
140	18 x 25.5	1063 x 1506
280	36 x 25.5	2126 x 1506
560	51 x 36	3012 x 2126
1120	72 x 51	4252 x 3012

**Tel. 902 361 923**

Sólo para España · Only for Spain · Somente para Espanha

[www.magic-labs.com](http://www.magic-labs.com)  
[consultas@magic-labs.com](mailto:consultas@magic-labs.com)

UN PUZZLE DE CALIDAD PROFESIONAL EDUCA® FABRICADO ESPECIALMENTE PARA USTED A PARTIR DE SU FOTO FAVORITA. UN SOLO EJEMPLAR O TANTOS COMO QUIERA. UN REGALO ORIGINAL PARA HACER INOLVIDABLES LOS MOMENTOS, LUGARES O SERES QUERIDOS.

A PROFESSIONAL QUALITY EDUCA® PUZZLE MANUFACTURED ESPECIALLY FOR YOU FROM YOUR FAVOURITE PHOTO. ONE PUZZLE OR AS MANY AS YOU LIKE. AN ORIGINAL GIFT TO MAKE MOMENTS, PLACES OR LOVED ONES UNFORGETTABLE.

UM PUZZLE COM A QUALIDADE PROFISSIONAL EDUCA® FABRICADO ESPECIALMENTE PARA SI A PARTIR DA SUA FOTOGRAFIA PREFERIDA. SÓ UM EXEMPLAR OU TANTOS QUANTOS QUISER. UM PRESENTE ORIGINAL PARA TORNAR INESQUECÍVEIS OS MOMENTOS, LUGARES OU SERES QUERIDOS.

Magic Labs es una empresa del Grupo Educa Borrás S.A.

Magic Labs is a company in the Educa Borrás S.A. Group

Magic Labs é uma empresa do Grupo Educa Borrás S.A.





# 500 GENUINE



500 33.5 x 23 x 4.5 cm  
13 1/4" x 9" x 1 3/4"  
 48 x 34 cm  
18 3/4" x 13 1/2"

**N**



OA

© Keith Kimberlin / Licensed by LoCocoCensIng.com (P/S)

500

**13758**  
MADRE E HIJO  
MOTHER AND CHILD  
MÃE E FILHO



8 412668 137585

**N**



OA

© eger fotoback

500

**13790**  
FUJIYOSHIDA, JAPÓN  
FUJIYOSHIDA, JAPAN  
FUJIYOSHIDA, JAPÃO



8 412668 137905

**G**

OU



© ONLY HORSES PICTURE AGENCY / LICENSED BY LOCCOCOCEUSING.COM (P/S)

500

**11735**  
CABALLO BLANCO  
WHITE HORSE  
CAVALO BRANCO



8 412668 117358



500

**13414**  
NEW YORK SKYLINE, 1920



8 412668 134140

OL



© Michael Maslan Historic Photographs / COBIS



**500** 33.5 x 23 x 4.5 cm  
13 1/4" x 9" x 1 3/4"

48 x 34 cm  
18 3/4" x 13 1/2"



OL



© 2007 Merklejohn Graphics. Licensed by MGL, UK

OA



© Keith Kimberlin / Licensed by LaCocooning.com (PPL)

**500** **13759**  
BULL DOG  
BULL DOG  
BULDOGUE



**500**

**13412**  
AULLIDO EN LA NOCHE  
HOWLING CUB CROP  
UIVOS À NOITE



OE

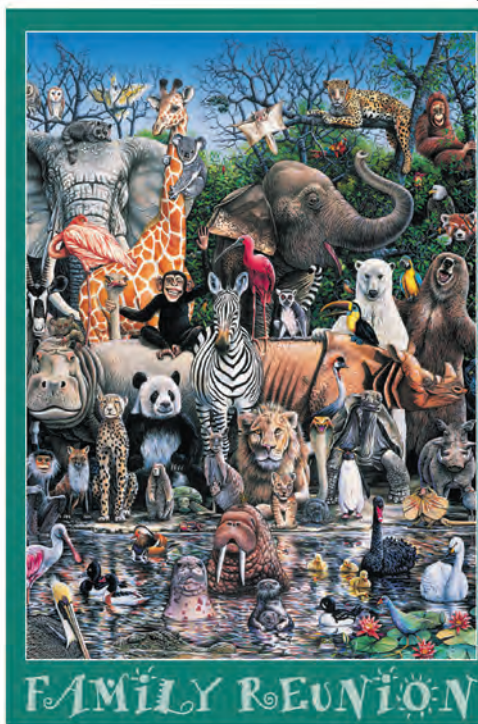


© 2004 MERKLEJOHN GRAPHICS, LONDON, UK  
LICENSED BY MERKLEJOHN GRAPHICS LICENSING (MGL)

**500** **13025**  
DESCANSANDO EN LA ORILLA  
RESTING BY THE POOL  
DESCANSO À BEIRA-MAR



OC



© Royce B. McCleure

**500**

**500**

**13410**  
ESTUPENDOS PORTOS, RAYMOND CAMPBELL  
DIVINE PORTS, RAYMOND CAMPBELL  
VINHOS DO PORTO, RAYMOND CAMPBELL

**12438**  
FAMILY REUNION



By courtesy of Felix Rosenfeld's Widow & Son Ltd., London



# 500 GENUINE

CONSERVER  
**FIX 50**  
PUZZLE  
Community trademark

500 33.5 x 23 x 4.5 cm  
13 1/4" x 9" x 1 3/4"

48 x 34 cm  
18 3/4" x 13 1/2"



OI

© Bo Torres 2004. Licensed by www.artagency.com

500

12731  
TAJ MAHAL, INDIA



8 412668 127319



OA



© Royce B. McClure. All rights reserved.

500

13760  
MARIPOSAS  
BUTTERFLIES  
BORBOLETAS



8 412668 137608



OA

© Danny Johnson/Corbis

500

13761  
DUBROVNIK, CROACIA  
DUBROVNIK, CROATIA  
DUBROVNIK, CROÁIA



8 412668 137615



OL

© 2007 K&L Reiner/Applique Art Partners

500

13413  
GATTOLANDIA  
KITTYLAND  
A TERRA DOS GATINHOS



8 412668 134133

500

13057  
RIO DE JANEIRO, BRASIL  
RIO DE JANEIRO, BRAZIL  
RIO DE JANEIRO, BRASIL



8 412668 130579



OE

© FOTOTECA 9x12 S.L.



**500** 33.5 x 23 x 4.5 cm  
13 1/4" x 9" x 1 3/4"

48 x 34 cm  
18 3/4" x 13 1/2"

CONSERVER  
**FIX 500**  
PUZZLE  
Community trademark

OA



© Hugh Sitar / Getty Images

**500** **13762**  
KRABI, TAILANDIA  
KRABI, THAILAND  
KRABI, TAILÁNDIA



OE



© 2004 MERLETON GRAPHICS, LONDON, UK  
LICENSED BY MERLETON GRAPHICS LICENSING (MGL)

**500**

**13026**  
PRINCESA DE LAS HADAS  
FAIRY PRINCESS  
PRINCESA DAS FADAS



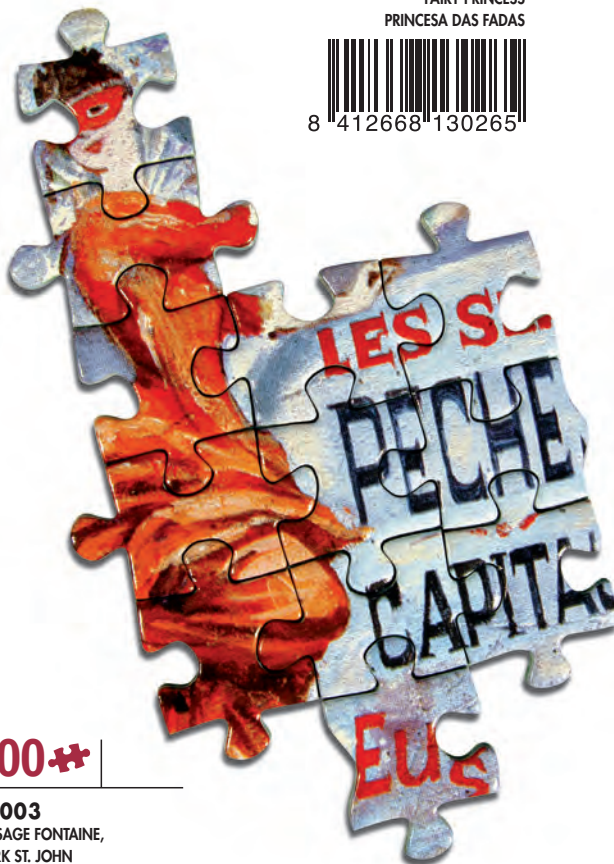
© ogg fotocontact



**500** **13763**  
COLISEO DE ROMA, ITALIA  
ROME COLISEUM, ITALY  
COLISEU DE ROMA, ITÁLIA



OA



**500**

**12003**  
PASSAGE FONTAINE,  
MARK ST. JOHN



OR

© CLASSIC COLLECTIONS FINE ART, LTD., IRVINGTON, NY



# 1000 GENUINE



1000 37 x 27 x 5.5 cm  
14 1/2" x 10 1/2" x 2 1/4"  
 68 x 48 cm  
 26 3/4" x 18 3/4"



OE

© 2004 MERLONI GRAPHICS, LONDON, UK  
LICENSED BY MERLONI GRAPHICS LICENSING (MGL)

1000

13029  
TUTANKAMON  
TUTANKHAMEN  
TUTANKAMON



8 412668 130296



OA



© FOTOTECA 9x12 S.L.

1000

13764  
MACHU PICCHU, PERÚ  
MACHU PICCHU, PERÚ  
MACHU PICCHU, PERÚ



8 412668 137646

G



OE

© Royce B. McClure. All rights reserved.

1000

13027  
PASEO POR EL CIELO  
SKY ROADS  
PASSEIO NO CÉU



8 412668 130272

1000

13031  
GUILIN, GUANGXI, CHINA



8 412668 130319



OI

© 2004 Merlioni Graphics, Licensed by MGL, UK

1000

12733  
EL BESO  
THE KISS  
O BEIJO



8 412668 127333



OE

© FOTOTECA 9x12 S.L.



OA

**1000** 37 x 27 x 5.5 cm  
14 1/2" x 10 1/2" x 2 1/4"  
 68 x 48 cm  
26 3/4" x 18 3/4"

CONSERVE  
**FIX 50**  
PUZZLE  
Community trademark

OR



ARTWORK 2002 DAVID MILLER. LICENSED BY THE IMAGE FORUM.

**1000** **12007**  
UN MAR DE COLORES  
A MYRIAD OF COLOUR  
AS CORES DO MAR



**N**

© Steve Bloom / stevebloom.com

**1000** **13767**  
TIGRE  
TIGER FACE  
TIGRE



OL

© By courtesy of Felix Rosenthal's Widow & Son Ltd., London

**1000** **13416**  
LA HAMACA, PETER ADAMS  
THE HAMMOCK, PETER ADAMS  
A REDE, PETER ADAMS



OL

© 2007 MetteJohn Graphics. Licensed by MGL, UK

**1000**

**13418**  
EL ATAQUE DEL DRAGÓN  
DRAGON ATTACK  
DRAGON ATTACK



OE

© Royce B. McClure. All rights reserved.

**1000**

**13028**  
SISTEMA SOLAR  
YOU ARE HERE  
SISTEMA SOLAR





# 1000 GENUINE

CONSERVER  
**FIX 50**  
PUZZLE  
Community trademark

1000 37 x 27 x 5.5 cm  
14 1/2" x 10 1/2" x 2 1/4"

68 x 48 cm  
26 3/4" x 18 3/4"



OL



OA



© Royce B. McClure. All rights reserved.

1000

**13769**  
PECES PAYASO  
CLOWN SCHOOL  
PEIXE PALHAÇO



8 412668 137691

1000

**13228**  
¡BUENA SUERTE! E.B.LEIGHTON  
GOD SPED! E.B.LEIGHTON  
GOD SPED! E.B.LEIGHTON



8 412668 132283



OL

1000

**13417**  
PASTA  
PASTA  
MASSA



8 412668 134171

© Christel Rosenfeld/M. Stock, Ltd.  
Agency Art & Design Licensing A.L. GmbH  
All rights reserved.



OA

1000



**13930**  
A TODA VELOCIDAD  
KEEP ON DRIVING  
A TODA A VELOCIDADE



8 412668 139305

1000

**13030**  
SAN FRANCISCO, USA



8 412668 130302



OE

© PHOTODESIGN-KIRSCH.COM



**1000** 37 x 27 x 5.5 cm  
14 1/2" x 10 1/2" x 2 1/4"  
 68 x 48 cm  
26 3/4" x 18 3/4"

CONSERVER **FIX 50**  
PUZZLE  
Community trademark

OA

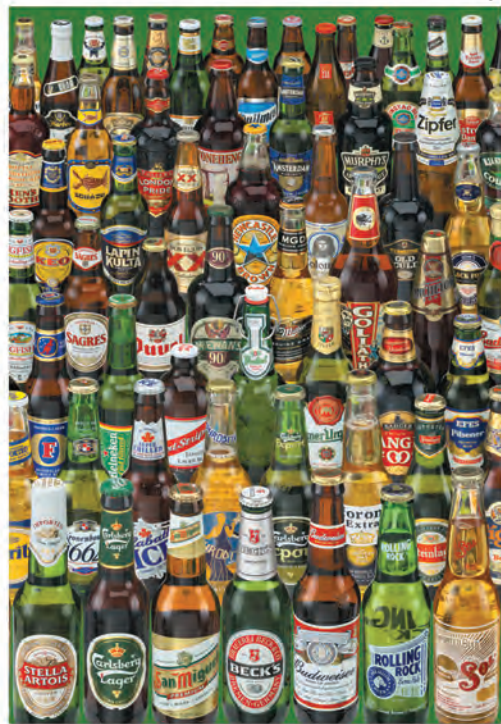


© Steve Bloom / stevebloom.com

**1000** **13768**  
OSOS PANDA  
PANDA BEARS  
URSO PANDA



OI



© 2004 Pyramid Puzzles Ltd. Image used under license.

**1000**

**12736**  
CERVEZAS  
BEERS  
CERVEJAS



OL



© 2007 Mark Spain/Applejack Art Partners

**1000** **13419**  
MUJER CON SOMBRILLA, MARK SPAIN  
WOMAN WITH A PARASOL, MARK SPAIN  
MULHER COM SOMBRINHA, MARK SPAIN



OL



© FOTOFICA 9x12 S.L.

**1000**

**13415**  
PARQUE NACIONAL AMBOSELI, KENIA  
AMBOSELI NATIONAL PARK, KENIA  
PARQUE NACIONAL AMBOSELI, QUÉNIA



GA



© Fábbrica 9 x 12 S.L.

**1000**



**7330**  
ORBIS TERRARUM NOVA  
ET ACCURATISSIMA TABULA,  
N. VISSCHER





# 1500 GENUINE



**1500**  43 x 30 x 5.5 cm  
17" x 11 3/4" x 2 1/4"  
 85 x 60 cm  
33 1/2" x 23 1/2"



OL

Original Art by Tom Browning

**1500** 

**13420**  
NAVIDADES CON OSITOS, TOM BROWNING  
BEARLY CHRISTMAS, TOM BROWNING  
OS URSINHOS DO NATAL, TOM BROWNING



8 412668 134201



**1500** 

**13422**  
LA MEZQUITA AZUL, TURQUÍA  
THE BLUE MOSQUE, TURKEY  
A MESQUITA AZUL, TURQUIA



8 412668 134225



OA



© PhotoDesign-Kirsch.com

**1500** 

**13770**  
SANTA MARIA DELLA SALUTE, VENEZIA, ITALIA  
SANTA MARIA DELLA SALUTE, VENICE, ITALY  
SANTA MARIA DELLA SALUTE, VENEZA, ITALIA



8 412668 137707



OE

© Royce B. McClure. All rights reserved.

**1500** 

**13032**  
VIDA EN LA SELVA  
JUNGLE LIFE  
VIDA NA SELVA



8 412668 130326



OL

© egn forstbeck

G



**1500** 43 x 30 x 5.5 cm  
17" x 11 3/4" x 2 1/4"

85 x 60 cm  
33 1/2" x 23 1/2"



OA



© 2007 Howard Robinson

**1500** ✦

**13771**  
VIDA SALVAJE  
THE CRADLE OF LIFE  
VIDA SELVAGEM



8 412668 137714

OE



© James Lee. Licensed by Bentley Licensing Group

**1500** ✦

**13034**  
EARLY SERVICE, JAMES LEE



8 412668 130340

OA



© FOTOIECA 9x123.L

**1500** ✦

**13772**  
CATARATAS PARAKAUNI, NUEVA ZELANDA  
PARAKAUNI FALLS, NEW ZEALAND  
CATARATAS PARAKAUNI, NOVA ZELÂNDIA



8 412668 137721

OL



© Artist: Jan McLaughlin. Licensed by Bentley Licensing Group.

**1500** ✦

**13421**  
LUNES CERRADO, JAN MCLAUGHLIN  
CLOSED ON MONDAY, JAN MCLAUGHLIN  
FECHADO À SEGUNDA, JAN MCLAUGHLIN



8 412668 134218





# 1500 GENUINE

**N**



OA

CONSERVER  
**FIX 50**  
PUZZLE  
Community trademark

**1500** 43 x 30 x 5.5 cm  
17" x 11 3/4" x 2 1/4"

85 x 60 cm  
 33 1/2" x 23 1/2"

OA

**N**



© FOTOTECA 9412 S.L.

**1500**

**13795**  
HAWAII, ESTADOS UNIDOS  
HAWAII, USA  
HAWAI, ESTADOS UNIDOS



8 412668 137950

**G**

**1500**

**13773**  
EL VALLE DEL UNICORNIO  
UNICORN VALLEY  
O VALE DO UNICÓRNIO



8 412668 137738

OE



**1500**

**11750**  
PARAÍSO BAJO EL MAR  
PARADISE UNDER THE SEA  
PARAÍSO SOB O MAR



8 412668 117501

© Royce B. McClure

GE



MAGNA CARTA

**1500**

**7977**  
MAGNA CARTA, ANÓNIMO  
MAGNA CARTA, ANONYMOUS  
MAGNA CARTA, ANÓNIMO



8 411349 079770




8 412668 130357

**1500**

**13035**  
ESPECIAS  
SPICES  
ESPÉCIES



**2000**  43 x 30 x 5.5 cm  
17" x 11 3/4" x 2 1/4"

 96 x 68 cm  
37 3/4" x 26 3/4"

CONSERVE  
**FIX 50**  
PUZZLE  
Community trademark

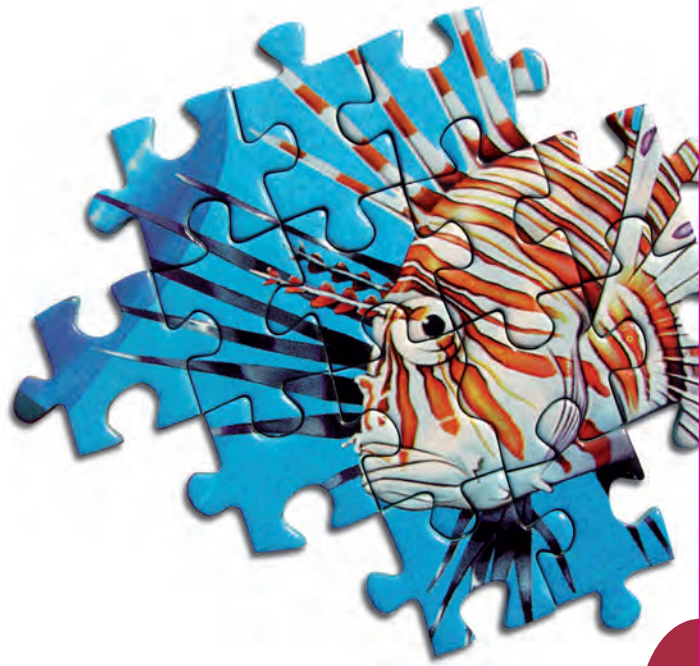
OA



© Photodesign-Kirsch.com

**2000**  **13774**  
SEYCHELLES

  
8 412668 137745



OL



© Rodney Leigh, Jr. www.throughthelens.com

**2000**  **13426**  
CATEDRALES ETERNAS  
EVERLASTING CATHEDRALS  
CATEDRAIS ETERNAS

  
8 412668 134263

OC



© Royce B. McClure. All rights reserved.

**2000** 


**12451**  
VIDA BAJO EL MAR  
SEA OF LIFE  
VIDA SOB O MAR

  
8 412668 124516

OE



© Jan McLaughlin. Licensed by Bentley Licensing Group

**2000**  **13037**  
LA TIENDA DE FLORES, JAN MCLAUGHLIN  
FLOWER SHOP, JAN MCLAUGHLIN  
A LOJA DE FLORES, JAN MCLAUGHLIN


  
8 412668 130371



# 2000 GENUINE

CONSERVIER  
**FIX 50**  
PUZZLE  
Community trademark

2000  43 x 30 x 5.5 cm  
17" x 11 3/4" x 2 1/4"

 96 x 68 cm  
37 3/4" x 26 3/4"



**N**



OA

© FOTOTECA 9x12 S.L.

2000 **+**

**13775**  
LAGO HALLSTATTER SEE, AUSTRIA  
HALLSTATTER SEE LAKE, AUSTRIA  
LAGO HALLSTATTER, ÁUSTRIA



8 412668 137752

G

GA



2000 **+**

**7396**  
THE ACCOLADE,  
E. B. LEIGHTON



8 411349 073969

2000 **+**

**7395**  
ATARDECER  
NIGHTFALL  
ENTARDECER



8 411349 073952

OL



© FOTOTECA 9x12 S.L.

2000 **+**

**13425**  
ISLA EN EL FIORDO HARDANGER, NORUEGA  
ISLAND IN HARDANGER FJORD, NORWAY  
ILHA NO FIORDE HARDANGER, NORUEGA




8 412668 134256

GA





**3000**  46 x 32 x 6 cm  
18 1/4" x 12 1/2" x 2 1/4"

 120 x 85 cm  
47 1/4" x 33 1/2"



© FORTUCA 9x12 S.L.

OL

**3000** 

**13427**  
COLLAGE DEL MUNDO  
WORLD COLLAGE  
COLAGEM MUNDO



8 412668 134270



OL

**3000** 

**13428**  
EL REINO DE LAS MONTAÑAS  
KINGDOM OF MOUNTAINS  
O REINO DAS MONTANHAS




8 412668 134287


© Rodney Lough, Jr. - www.TheLaughRoad.com





# 3000 GENUINE

**3000**  46 x 32 x 6 cm  
18 1/4" x 12 1/2" x 2 1/4"

 120 x 85 cm  
47 1/4" x 33 1/2"



© Bridget City Museum/www.Bridgetman.co.uk

OI

**3000** 

**12747**  
LA BELLE DAME SANS MERCI,  
SIR FRANK DICKSEE



8 412668 127470

G



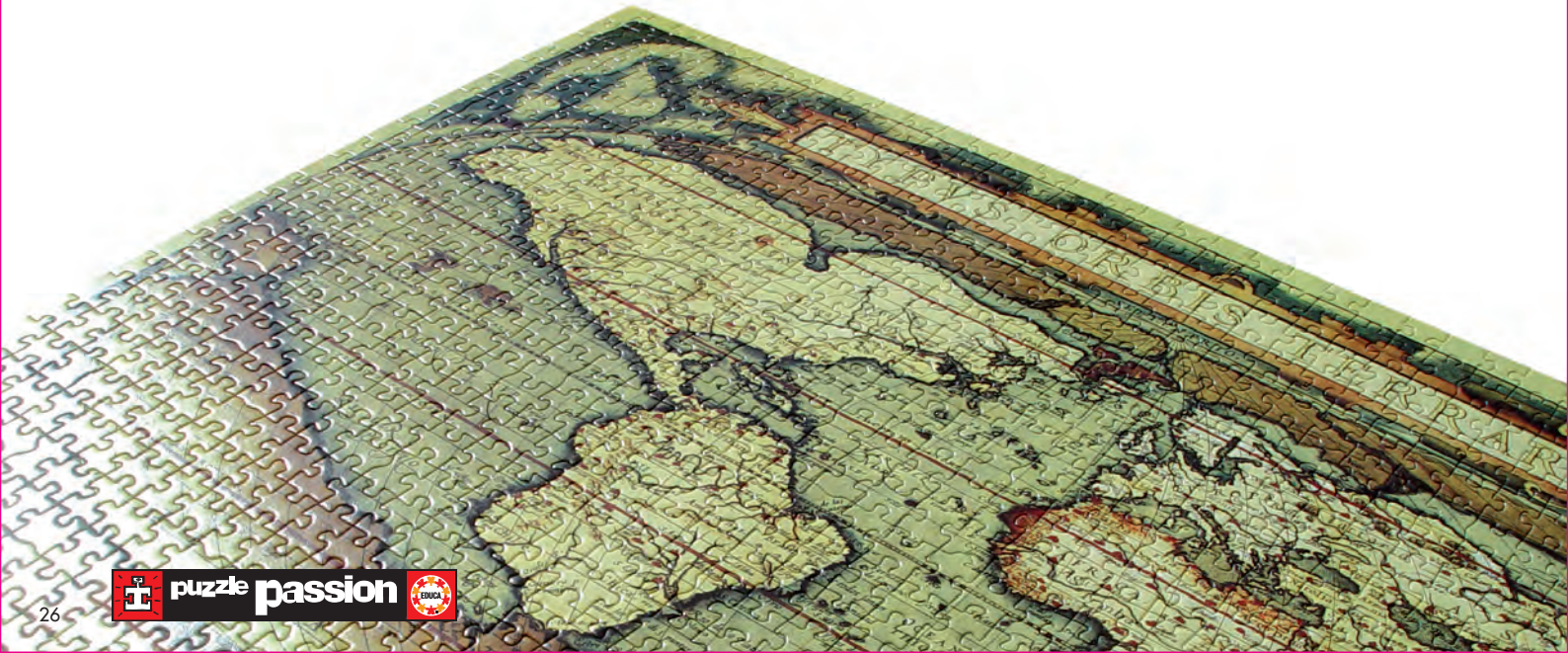
GA

**3000** 

**7484**  
TYPVS ORBIS TERRARVM




8 411349 074843





**4000**  46 x 32 x 8.5 cm  
18 1/4" x 12 1/2" x 3 1/4"

 136 x 96 cm  
53 1/2" x 37 3/4"



OA

**4000** 

**13776**

OTO O EN VILLNOSS, DOLOMITAS, ITALIA  
AUTUMN IN VILLNOSS, THE DOLOMITES, ITALY  
OUTONO EM VILLNOSS, DOLOMITAS, IT LIA



8 412668 137769

© FOTOTECA 9/12 S.L.

OI



**4000** 

**12749**

INVIERNO, PRIMAVERA, VERANO, OTO O, ALPHONSE MUCHA  
WINTER, SPRING, SUMMER, AUTUMN, ALPHONSE MUCHA  
INVERNO, PRIMAVERA, VER O, OUTONO, ALPHONSE MUCHA



8 412668 127494

© Alphonse Mucha, VEGAP, Barcellona 2005



OL



**4000** 

**13429**

FRAGMENTO DE VIDA ACU TICA  
A SLICE OF LIFE  
UMA FATIA DA VIDA





8 412668 134294

© Royce B. McClure. All rights reserved.



# 5000 GENUINE

**5000**  46 x 32 x 8.5 cm  
18 1/4" x 12 1/2" x 3 1/4"  
 157 x 107 cm  
61 3/4" x 42 1/4"

OI



© PHOTO DESIGN: KIRSCH.COM

**5000** 

**12750**

NEUSCHWANSTEIN Y ALREDEDORES  
NEUSCHWANSTEIN AND SURROUNDINGS  
NEUSCHWANSTEIN E ARREDORES



8 412668 127500

G

OE



**5000** 

**13039**


MUNDO VAN GOGH  
VAN GOGH S WORLD  
MUNDO VAN GOGH



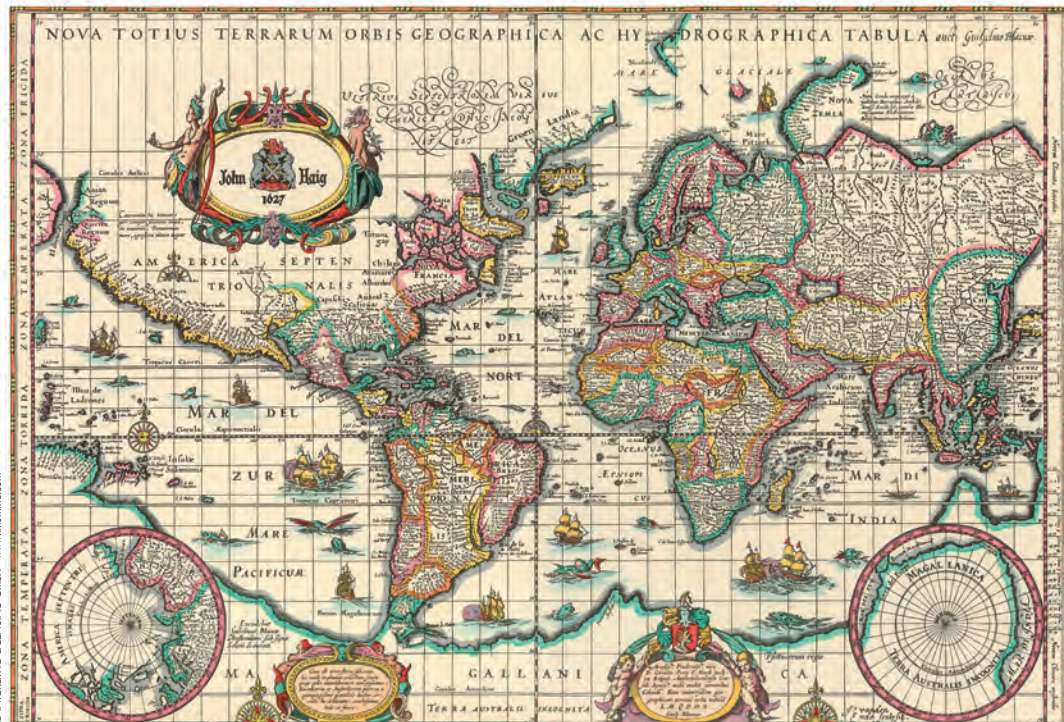
8 412668 130395



**6000**  46 x 32 x 8.5 cm  
18 1/4" x 12 1/2" x 3 1/4"

 156 x 107 cm  
61 1/2" x 42 1/4"

OA



**N**

**6000+**

**13777**  
MAPAMUNDI ANTIGUO  
ANCIENT MAP OF THE WORLD  
MAPA-M NDI ANTIGO



8 412668 137776

© INTERUHO LICENSING GmbH - www.interuho.com

**G**

OL



**6000+**

**13431**

LA RENDICI N DE GRANADA, F. PRADILLA  
THE SURRENDER OF GRANADA, F. PRADILLA  
A RENDI O DE GRANADA, F. PRADILLA



8 412668 134317