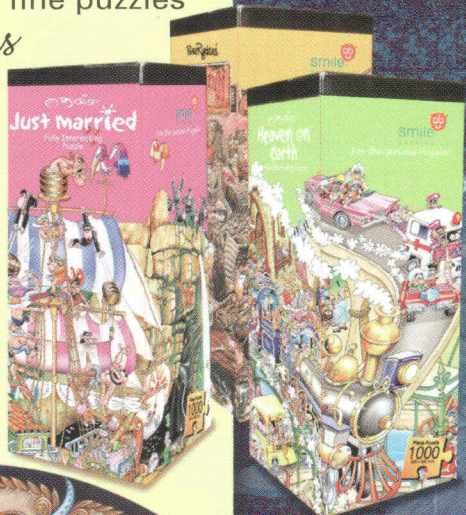


**smile**  
puzzles

Manufacturers of fine puzzles

For the serious  
Puzzler



▶ **STAR LEGENDS**  
Code: 9798 596 Round Piece Puzzle

Laguna  
Dream



▶ **SPITFIRE OVER LONDON**  
Code: 9419 1000 Piece Puzzle

Paul Thelever



▶ **GRAND PRIX - Monaco**  
Code: 9313 1000 Piece Puzzle

Paul Thelever



▶ **GRAND PRIX - Interlagos**  
Code: 9311 1000 Piece Puzzle

Paul Thelever



▶ **CROC INN**  
Code: 9352 1000 Piece Puzzle

Rose Ridgen's



▶ **FLAP INN**  
Code: 9354 1000 Piece Puzzle

Rose Ridgen's



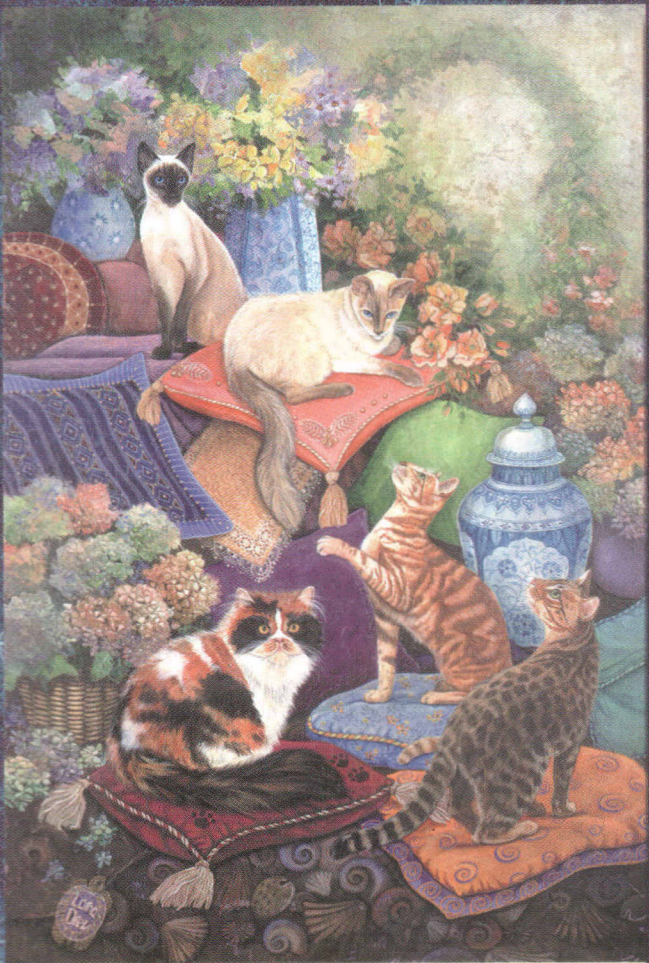
■ **PARROTS PARADISE**  
Code: 9768 1500 Piece Puzzle *Lorinda Drew*



■ **KILIMANJARO TWILIGHT**  
Code: 9497 1500 Piece Puzzle *Daphne Butler*



■ **ANIMAL KINGDOM**  
Code: 9520 1500 Piece Puzzle *A DaSilva*



■ **TINGRI**  
Code: 9427 1500 Piece Puzzle *Lorinda Drew*

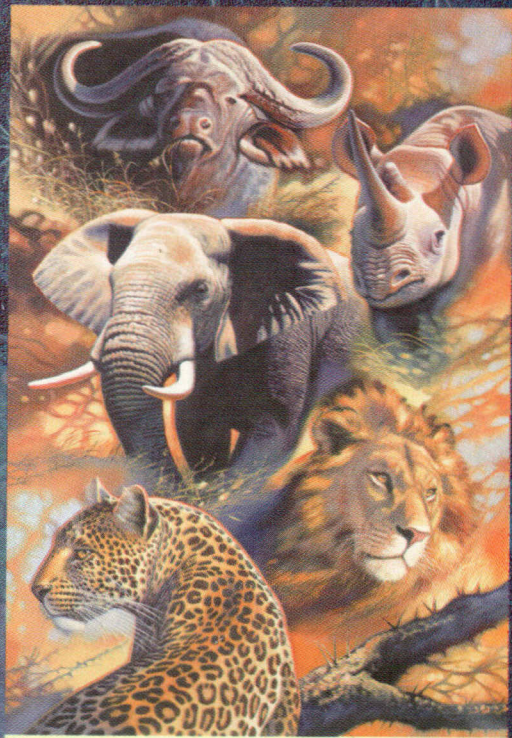


■ **FOREVER FRIENDS**  
Code: 9793 1000 Piece Puzzle *A DaSilva*



**ETHNIC MAP OF AFRICA**  
Code: 9416 1500 Piece Puzzle

*Firbank King*



**KHULA GAME**  
Code: 9413 1500 Piece Puzzle

*Daphne Butler*

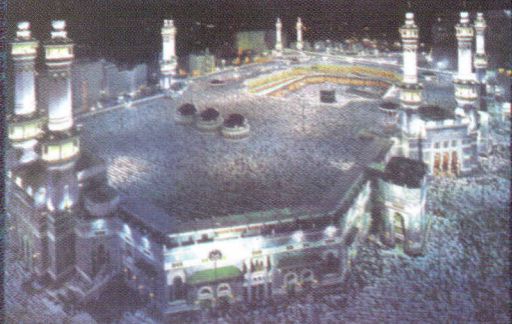


**ALL CREATURES**  
Code: 9418 1500 Piece Puzzle

*Firbank King*



**GRAND MOSQUES**  
Code: 9908 2 x 1000 Piece Puzzles



**WILD 5**  
Code: HORS08 1500 Piece Puzzle

THE AFRICA COLLECTION

- 500 Piece = 400 x 600mm
- 596 Piece = 490mm Diameter
- 750 Piece = 400 x 600mm
- 1000 Piece = 480 x 690mm
- 1500 Piece = 600 x 900mm

Box	Type	Box Size
	Triangle	150x150x210x368(h)mm
	Lid/Base	255x350x45(h)mm

Smile Puzzles  
P.O. Box 15, Florida Hills, 1716, South Africa  
Tel: (011) 477-1013, Fax: (011) 477-1490  
E-Mail: smilesa@smileisa.co.za  
Web: www.smileisa.co.za



▶ LUNCHEON OF THE BOATING PARTY  
Code: 9711 1000 Piece Puzzle

*Renoir*

▶ NEW YORK 1946  
Code: 9712 1000 Piece Puzzle

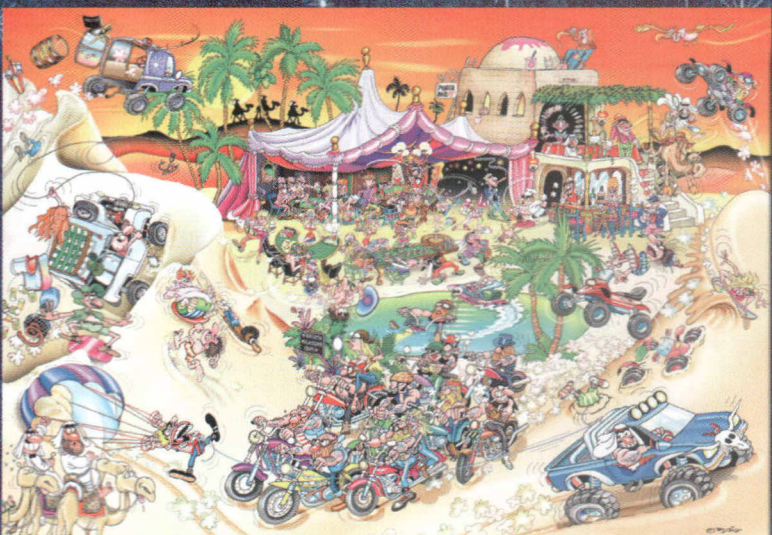


▶ JUST MARRIED  
Code: 9580 1000 Piece Puzzle

© RJ CRISP



▶ HEAVEN ON EARTH © RJ CRISP  
Code: 9584 1000 Piece Puzzle



▶ OASIS  
Code: 9582 1000 Piece Puzzle

© RJ CRISP



▶ ISLAND  
Code: 9586 1000 Piece Puzzle

© RJ CRISP